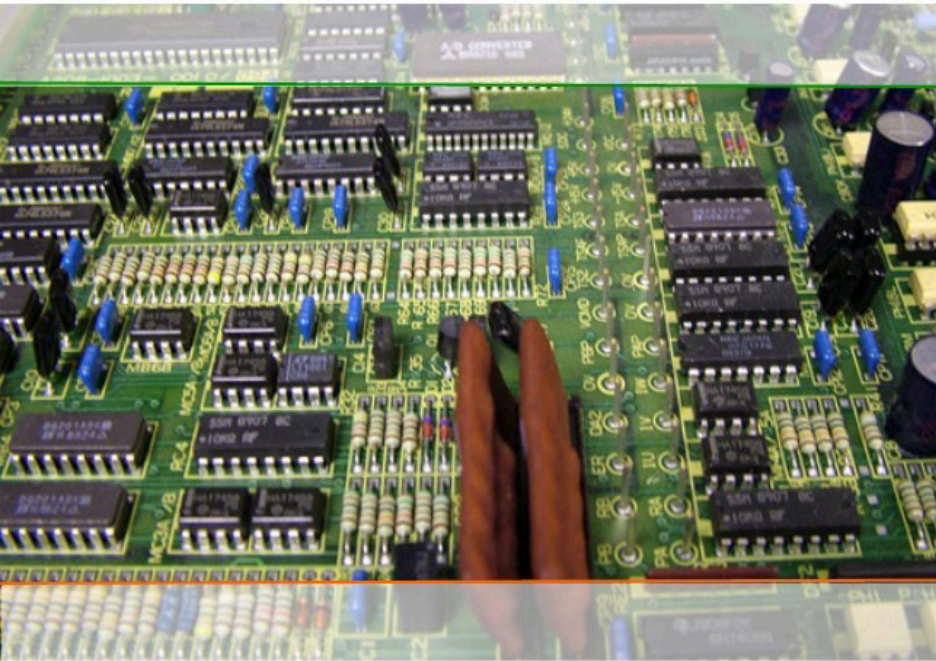
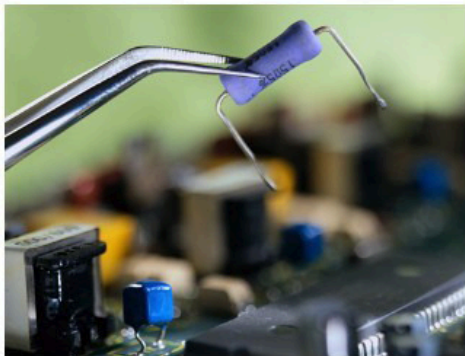


## A Complete Repair Service for Industrial Electronics



- Printed Circuit Boards
- Digital & Analogue PCB's
- Programmable Logic Controllers
- Power Supplies
- Process Controllers
- Monitors & HMI's
- Control Panels
- Obsolete Equipment Support
- PCB Manufacturing



"Repair and refurbishment of industrial electronic equipment not only saves time and money, it extends product life and reliability"

- 12 month warranty on all repairs
- Full equipment refurbishment to increase reliability
- Fast repair turnround
- 1000's of specific test & repair procedures
- Pinpoint diagnosis equipment
- Surface mount & multilayer PCB repair facility
- Permanent R&D team
- Thermal image diagnostics
- Obsolete equipment support
- Extensive fault evaluation & test reporting
- Track the progress of your repair online
- Free collection, quote and delivery service

**Call Us  
24 Hours**

**01782  
411021**

Fletcher Moorland Ltd, Elenora Street, Stoke on Trent, ST4 1QG, UK

